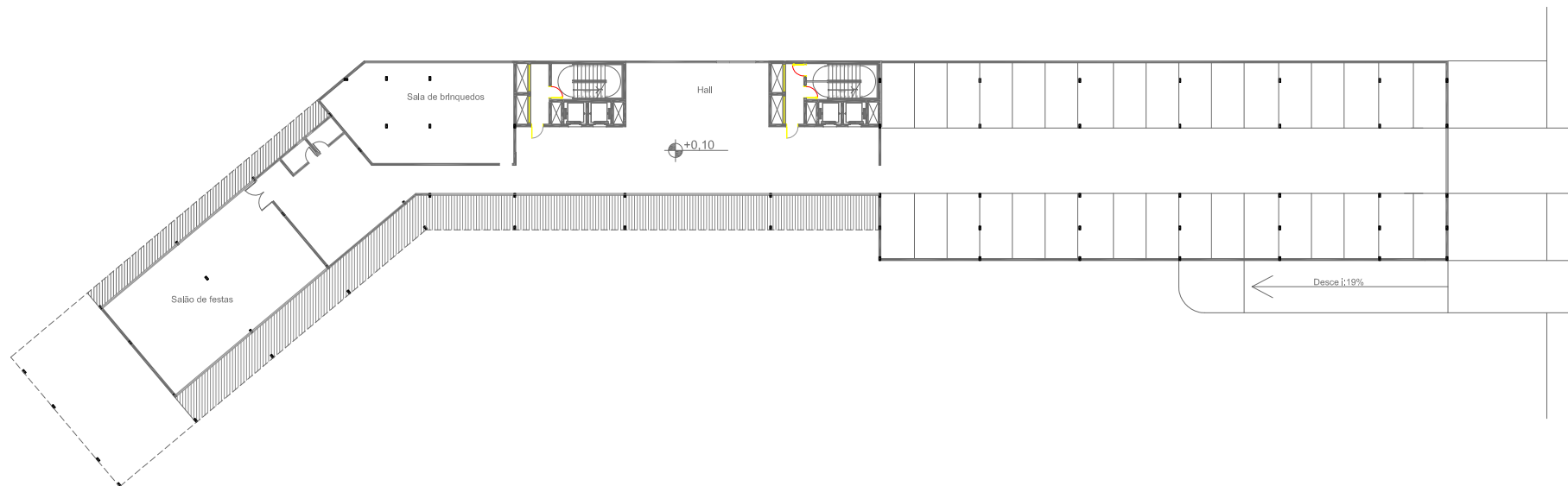
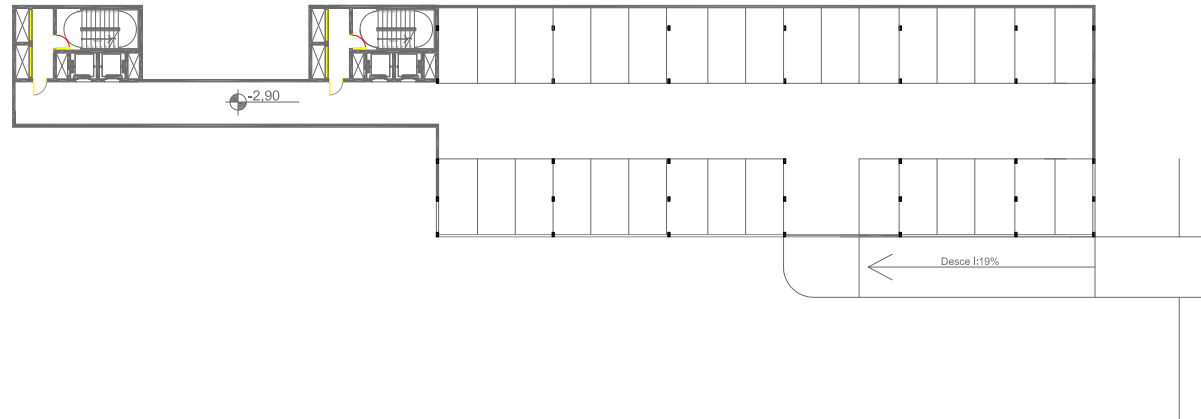
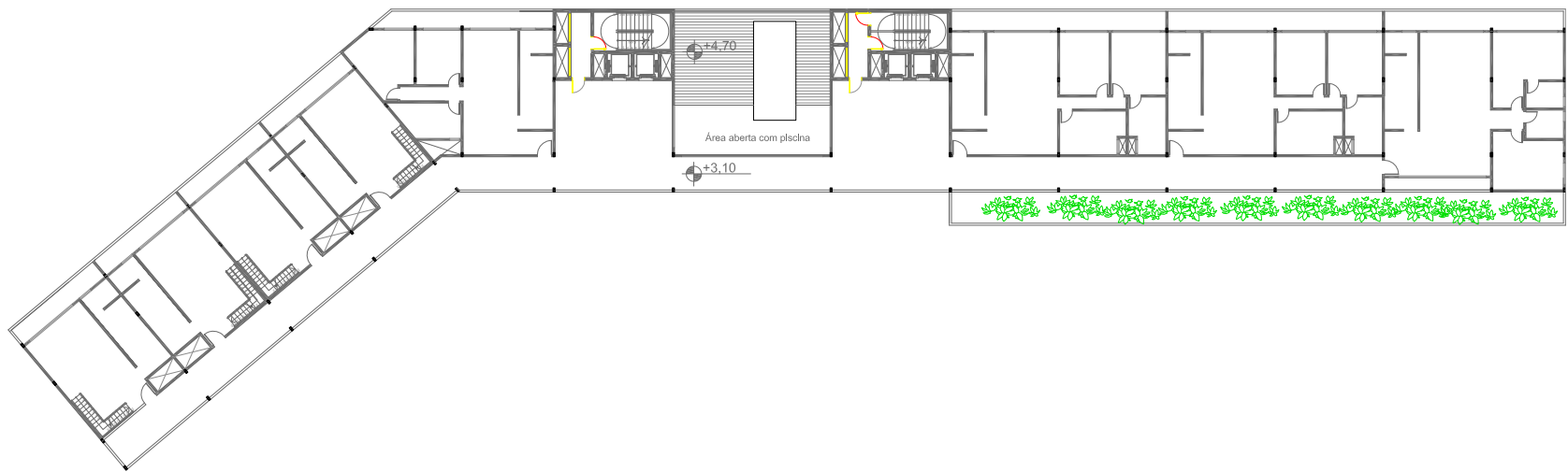


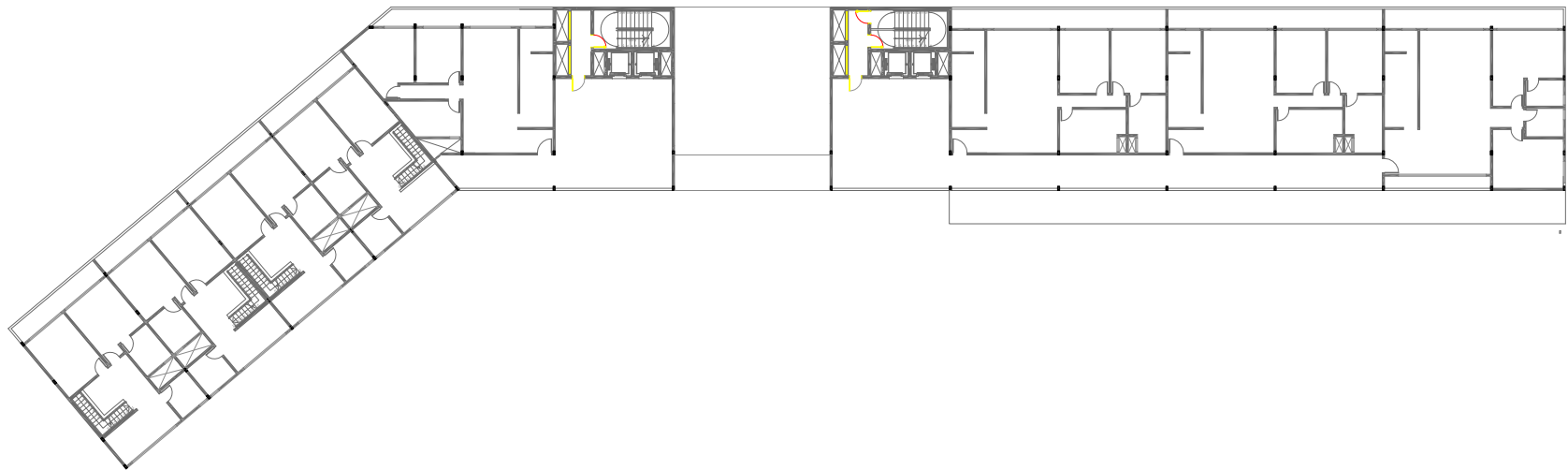
Planta Subsolo
Esc: 1:500



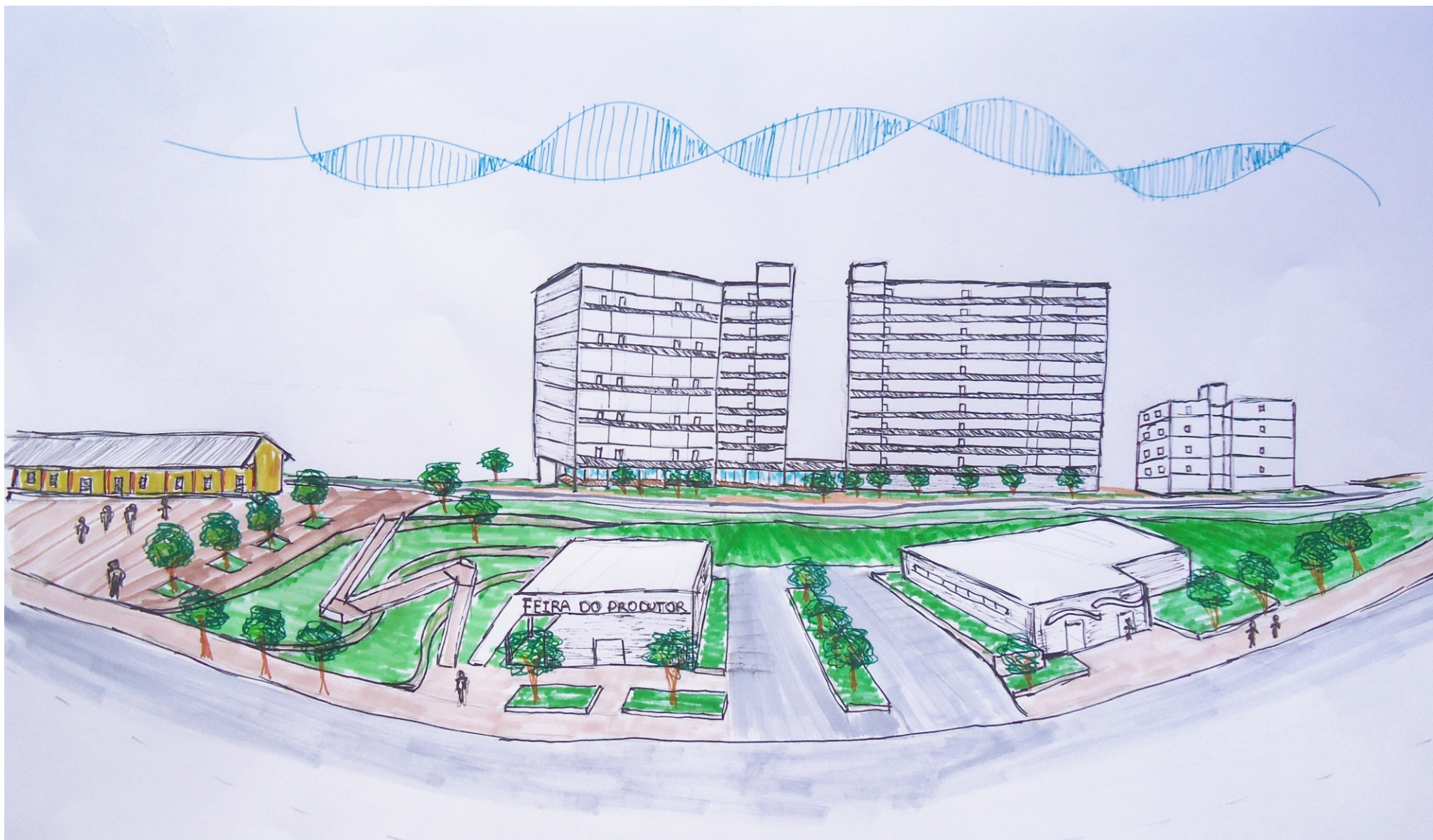
Planta Térreo
Esc: 1:500



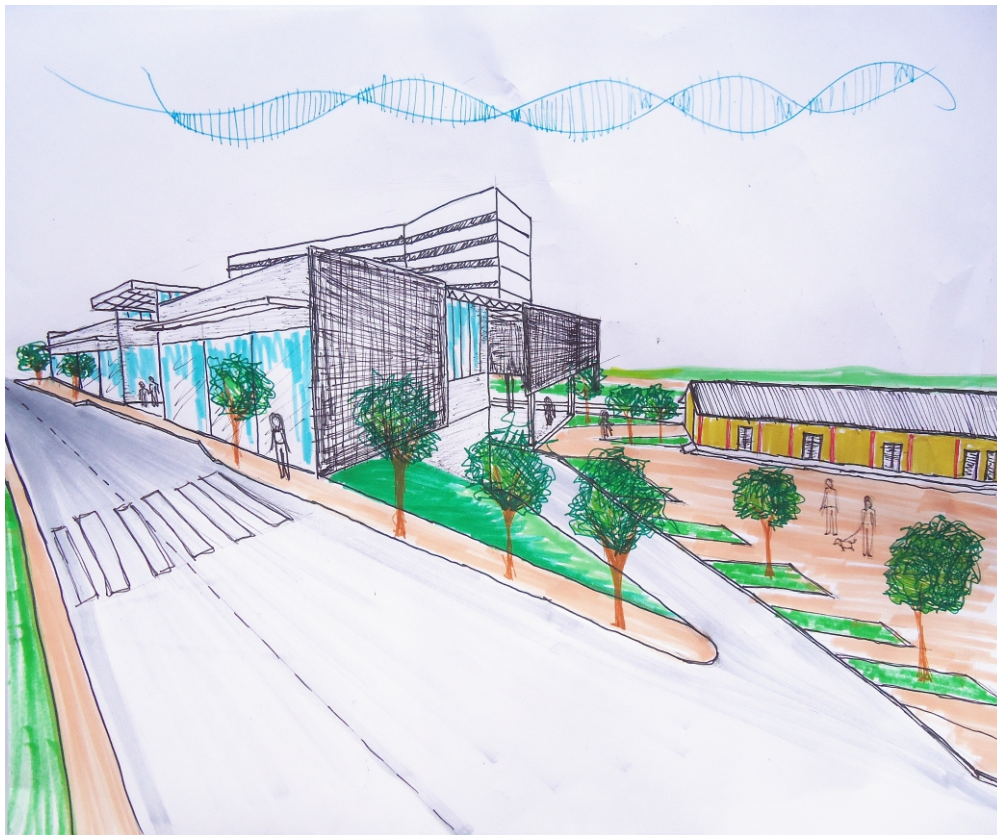
Planta Tipo 1
Esc: 1:500



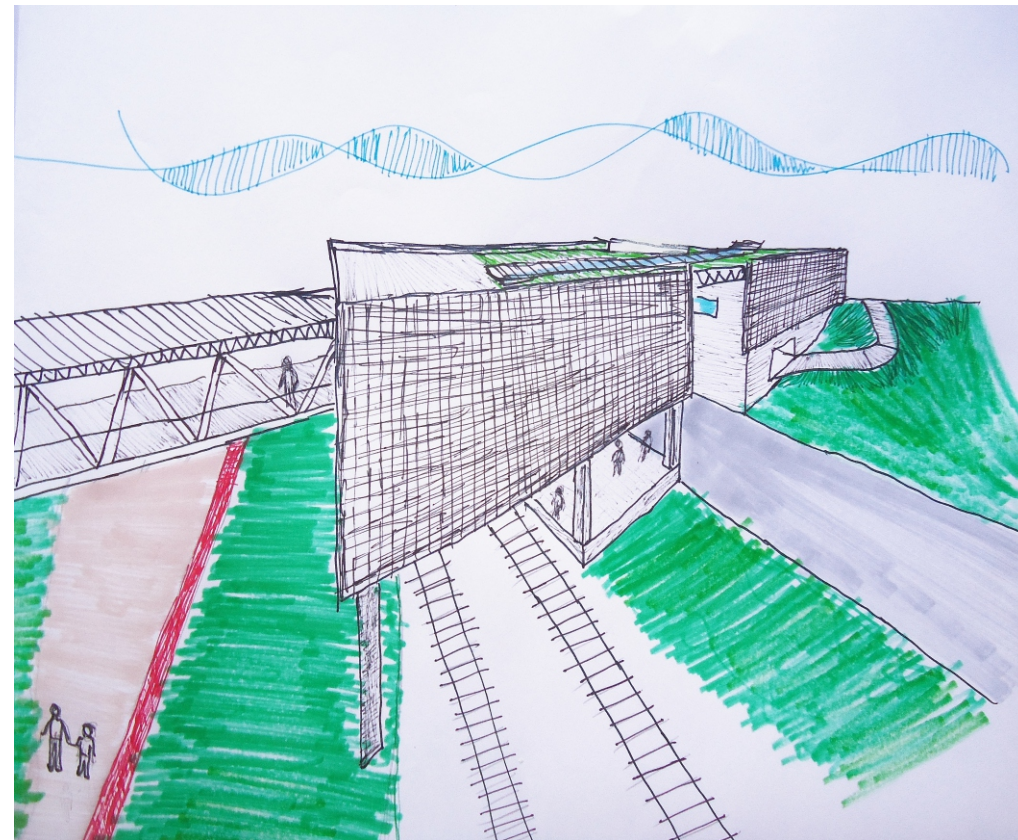
Planta Tipo 2
Esc: 1:500



Croqui dos equipamentos públicos, Feira do Produtor e Mercado Popular, com o edifício residencial proposto ao fundo, visto pela Rua Joaquim Brasil Cabral.



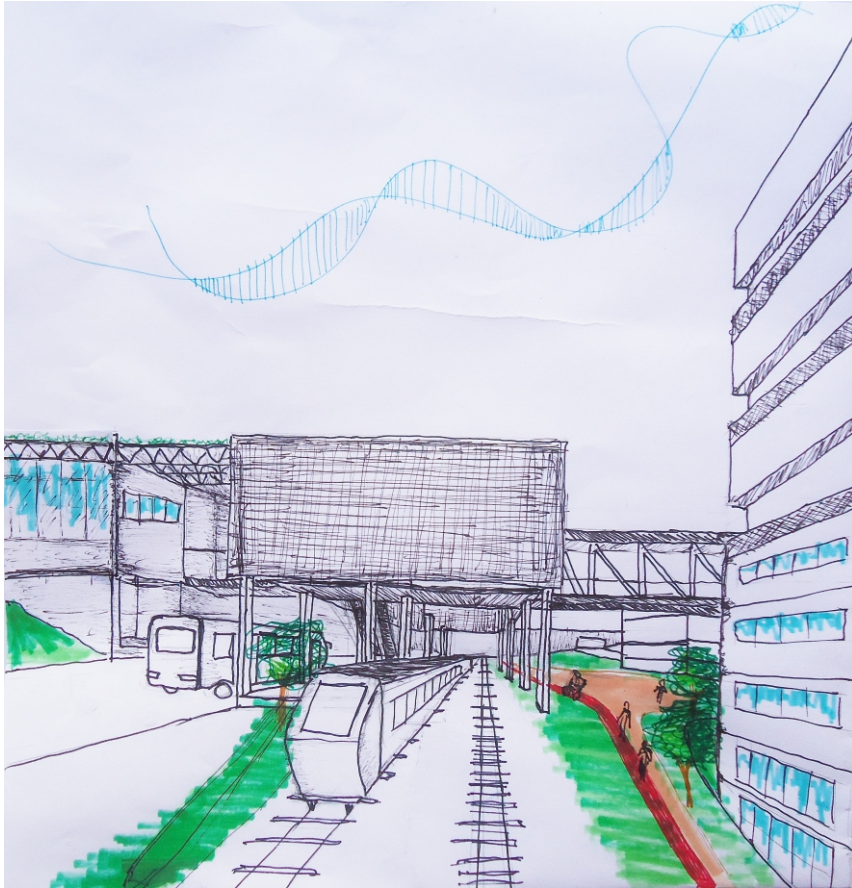
Vista da Estação antiga e da nova Estação a partir da Rua Luiz Berti.



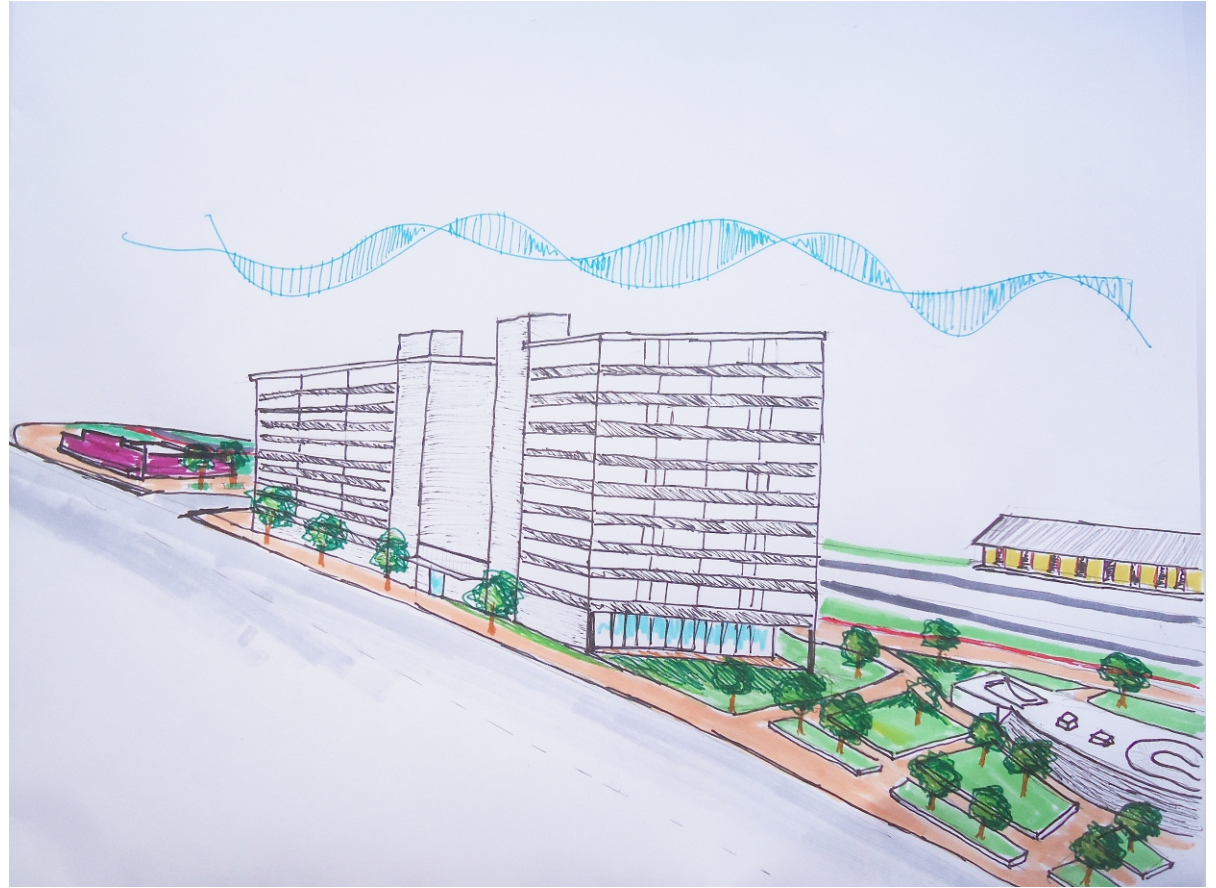
Vista da Estação Intermodal a partir do Viaduto Rubem Berta.

14| Partido

14.8 - Croquis da proposta



Vista da Estação Intermodal a partir dos trilhos



Vista da Rua Marcos Ôchoa.